

User Report

Logistic Services International, USA

ISO DRAW



Logistic Services International, Inc. (LSI) was founded in Jacksonville, Florida in 1978. Initially established to meet the aviation training and logistics support needs of foreign militaries operating U.S. Navy aircraft and systems, LSI today employs over 400 people and has earned an enviable reputation for innovation, responsiveness, and reliability among a customer base that includes the U.S. Department of Defense and Department of Homeland Security, as well as numerous foreign militaries such as those of Norway, the Netherlands, and South Korea. Also, the largest military aircraft manufacturing and support companies in the United States are among LSI's customer base.

LSI offers professional technical publication and illustration services including technical writing, validating, editing, proofreading, scanning, and illustrating for paper production or electronic media. LSI's Technical Data Services include:

- Operating Manuals
- Organizational and Intermediate Maintenance Manuals
- Wiring Data Manuals
- Illustrated Parts Breakdown Manuals
- Training Manuals
- Technical Illustrations
- Interactive Electronic Technical Manuals (IETMs)

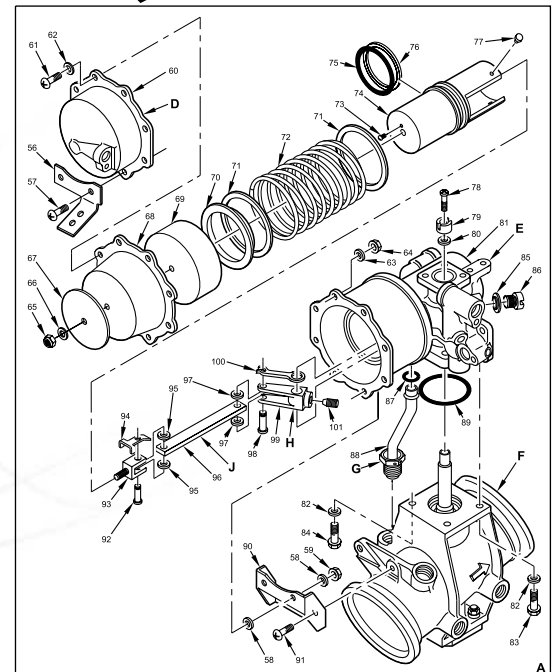
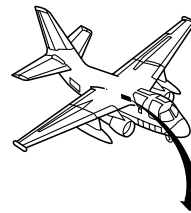
LSI has established ISO 9001:2000 registered quality processes to ensure a technically accurate publication compliant with all the customer's requirements and industry standards – on time and on budget. To meet this high level of quality in a timely manner, LSI introduced IsoDraw by ITEDO Software into their documentation workflows in 1998.

Military specifications and commercial requirements

LSI creates technical manuals for DOD and commercial systems. The challenge for the Technical Publication Department is to always satisfy the latest Mil-Spec requirements for DOD as well as the requirements of the commercial customers.

Apart from that, LSI continuously maintains a high volume of work in the Technical Publication Department. New manuals and those undergoing revision are produced electronically as well as PDF versions that can be distributed on CD.

There are three major factors why LSI chose IsoDraw for technical illustration – these factors helped them to considerably improve their documentation workflows and thus save time and money.



Sample of an Illustrated Parts Breakdown (IPB) for S3 Aircraft

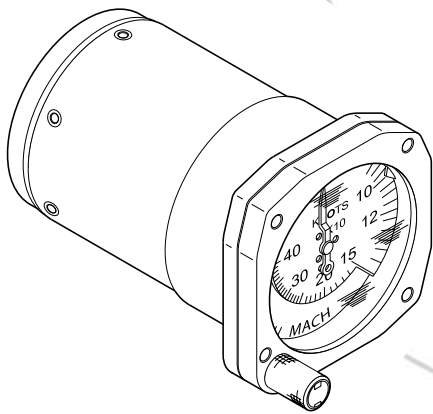


ISODRAW

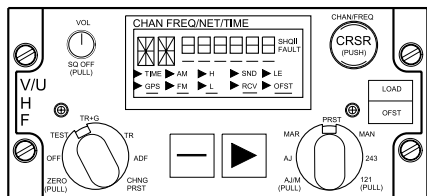


"One reason my company invested in using IsoDraw software to produce illustrations was because we are mainly using Quicksilver (InterLeaf) for producing the final documents. With IsoDraw we have greater flexibility to handle a wide variety of drawing formats, which was a major point in making the choice. Clearly, IsoDraw is superior to the competition in the production of Interleaf and CGM files, and ease of use."

Bob Doucette Jr
Division Manager
Technical Publications



IsoDraw is the state-of-the-art software for drawing in perspective, but also provides productivity advantages for drawing of flat views.



IsoDraw's unique drawing tools

IsoDraw contains tools that were especially developed for the needs of technical illustrators and that go far beyond the capabilities of common graphics programs. Unique features like the magnetic grid, the "Find ellipse" function and the Shaft tool have proved to be tremendous time-savers.

IsoDraw's compliance to major industry standards

ITEDO Software is and has always been actively working in the field of standards and contributing to the development of some, most notably CGM. Therefore their products are compliant to the latest versions of the major industry standards, such as CALS MIL-D-28003A/B, SAE J2008, WebCGM or the ATA GREXCHANGE profile. No wonder IsoDraw has been implemented so widely over various industries and on a global basis. This is especially important for companies doing global business as well as business with the military forces, as LSI does.

IsoDraw's large variety of professional filters

IsoDraw offers a large variety of filters that allow a smooth data exchange with a number of applications. For a service provider like LSI this is an important factor. Besides Quicksilver, LSI uses a number of other publications applications depending on the customer's requirements and therefore it is vital for LSI to have a software tool that allows a high level of interoperability.

Another great benefit for LSI is IsoDraw's standard parts library. "Since LSI also creates a lot of electronic systems documentation, we use the IsoDraw library which is extremely valuable for us when we use our new symbols to add to our wiring schematics diagrams along with mechanical parts. It saves us about 80-90% of time from redraw or creating new symbols or mechanical parts. We just click and paste where it belongs. This would not be possible with any other software than IsoDraw. If we didn't have IsoDraw we couldn't produce our manuals in a timely manner with other software," explains Bob.

As a service provider serving not only DOD, but also foreign military and commercial customers, LSI has a variety of demands and requirements on their services. To be competitive, it is important that their processes are as streamlined as possible – combining a qualified workforce with state-of-the-art software. Such an optimized workflow allows LSI to deliver high quality in a time-efficient manner.

For more information regarding LSI's products visit www.lsijax.com or contact Phil Voss, Corporate Vice President at (904) 771-2100.

